

[www.indiratrade.com](http://www.indiratrade.com)



MONDAY

# CURRENCY COMMODITIES

**WEEKLY REPORT  
12 NOV TO 16 NOV 2018**

**EDGE**



**INDIRA SECURITIES PVT. LTD.**



## WEEKLY INDICES CHANGES

INDEX	CLOSE	PREV. CLOSE	Change (%)
SENSEX	35158.55	35011.65	0.42%
NIFTY	10585.2	10553	0.31%
DOW	25989.3	25270.8	2.84%
NASDAQ	7406.9	7356.99	0.68%
FTSE	7105.34	7094.12	0.16%
NIKKEI	22283	22243	0.18%
DAX	11529.2	11519	0.09%
CAC	5106.75	5102.13	0.09%

## Market Round Up:

- Forex - Dollar Flat After Fed; Aussie Dollar Falls on Weak China PPI Data: - The U.S. dollar was little changed on Friday after the Federal Reserve left interest rates on hold as expected. The Aussie dollar slipped after China reported weaker-than-expected China PPI release.
- The Fed maintained its confidence that "economic activity has been rising at a strong rate." GDP growth has averaged 3.3% for the first three quarters in 2018 and markets projected growth for the final three-month to be around 3%. So far, the Fed has raised rates three times this year and is widely expected to do so again next month.
- U.S. stocks slumped as investors considered what a tumble in oil prices means for the economy. The dollar extended a gain and gold dropped after a report showed producer prices rose more than forecast in October.
- U.S.-China trade relations received some focus after Chinese President Xi Jinping said on Thursday, ahead of a meeting with his U.S. counterpart Donald Trump, that Beijing wants to resolve problems with the U.S. through talks but Trump must respect China's choice of development path and interests.

## RBI REFRANCE RATE

INDEX	CLOSE	PREV. CLOSE
USDINR	72.7347	72.8798
EURINR	82.5195	83.2292
JPYINR	63.8400	64.4700
GBPINR	94.8737	94.7530

## FII FIGURES

DATE	FII FIGURES IN CRORE
05/11	12
06/11	-499
07/11	0
08/11	31
09/11	614
NET	158

## DII FIGURES

DATE	DII FIGURES IN CRORE
05/11	-621
06/11	119
07/11	0
08/11	27
09/11	-337
NET	-812



## DOLLAR INDEX CHART



1. **RSI:** 62.20
2. **ADX:** Indicating Sideways signal
3. **Stochastic Oscillator:** indicating Sideways signal
4. **ATR:** 1.19
5. **Moving averages:** Pair is trading above 50 and 100 Day simple moving averages..

## USDINR TECHNICAL CHART (INDIAN RUPEE)



- 1) **RSI:** 79.39
- 2) **ADX:** Indicating positive signal
- 3) **Stochastic Oscillator:** indicating positive signal
- 4) **ATR:** 0.8760
- 5) **Moving averages :** Pair is trading above 50 and 100 Day simple moving averages..



## DOMESTIC CURRENCY

Domestic	S2	S1	PIVOT	R1	R2
USDINR	71.98	72.37	72.71	73.11	73.45
EURINR	93.57	94.29	95.35	96.07	97.13
GBPINR	63.73	64.02	64.49	64.78	65.25
JPYINR	71.98	72.37	72.71	73.11	73.45

## GLOBAL CURRENCY

Global	S2	S1	PIVOT	R1	R2
DOLLAR INDEX	93.26	94.19	94.78	95.71	96.3
EURUSD	111.86	112.55	112.99	113.68	114.12
GBPUSD	1.29	1.3	1.31	1.31	1.33
USDJPY	1.15	1.15	1.17	1.18	1.19

## CURRENCY PERFORMANCE

CURRENCY	CLOSE PRICE	DAY	WEEK	MONTHLY	YEARLY
EURO	1.13387	-0.21%	-0.41%	-1.56%	-2.78%
POUND	1.29739	-0.67%	0.03%	-1.67%	-1.62%
AUSTRALIAN DOLLAR	0.72291	-0.37%	0.45%	2.40%	-5.64%
NEWZEALAND DOLLAR	0.67398	-0.18%	1.26%	4.54%	-2.72%
YEN	113.79	-0.24%	0.54%	1.35%	0.23%
YUAN	6.94632	0.09%	0.67%	0.33%	4.30%
SWISS FRANC	1.00541	-0.05%	0.20%	1.57%	0.99%
CANADIAN DOLLAR	1.3191	0.31%	0.64%	0.96%	4.03%
MEXICAN PESO	20.1003	-0.47%	0.38%	4.93%	5.21%
INDIAN RUPEE	72.475	0.15%	0.06%	-2.38%	11.19%
BRAZILIAN REAL	3.7299	-0.81%	0.90%	-0.66%	13.79%
RUSSIAN RUBBLE	67.9255	1.55%	2.74%	1.58%	14.77%
DOLLAR INDEX	96.87	0.15%	0.34%	1.43%	2.63%
KORREAN WON	1131.9	1.00%	1.32%	-0.91%	1.07%
SOUTH AFRICAN RAND	14.3156	1.53%	0.18%	-2.96%	-0.28%
SINGAPORE DOLLAR	1.3779	0.17%	0.23%	-0.38%	1.32%
HONGKONG DOLLAR	7.83272	0.08%	0.20%	-0.05%	0.41%



## FUNDAMENTAL OF COMMODITIES

### MAJOR COMMODITIES

#### MCX ENERGY WEEKLY

Commodity	S2	S1	Pivot	R1	R2
Crude oil- Sep	4295.7	4452.3	4715.7	4872.3	5135.7
Natural Gas-Sep	225.3	232.9	238.3	245.9	251.3

#### MCX BASE METAL WEEKLY

Commodity	S2	S1	Pivot	R1	R2
Copper-Nov	425.1	438.2	445.4	458.5	465.8
Zinc- Sep	180.2	184.4	191.7	195.9	203.2
Lead- Sep	134.9	140.3	143.6	149.0	152.3
Nickel- Sep	836.9	853.7	867.3	884.1	897.7

#### PRECIOUS METAL WEEKLY

Commodity	S2	S1	Pivot	R1	R2
Gold-Oct	31370.0	31560.0	31790.0	31980.0	32210.0
Silver-Dec	37560.0	38090.0	38531.0	39061.0	39502.0

International Commodity	S2	S1	Pivot	R1	R2	CMP	PREV CLOSE
Gold COMEX	\$1,202.33	\$1,217.67	\$1,228.33	\$1,243.67	\$1,254.33	\$1,225.00	\$1,233.00
SILVER COMEX	13.96	14.36	14.64	15.04	15.32	14.42	14.76
NYMEX CRUDE	59.25	61.2	64.57	66.52	69.89	60.67	63.14
BRENT CRUDE	68.42	70.49	74.25	76.32	80.08	70.96	72.57

#### Updates:

- Oil Slips Below \$60 a Barrel as Supply Concerns Weaken Demand: - Crude prices were lower on Friday, as rising supply and weakening economic growth decreased investor demand.
- Gold Prices Slips, Dollar Inches Up After Fed: - Gold prices fell while the dollar inched up on Friday after the U.S. Federal Reserve kept the federal funds rate in a range of 2 to 2.25% as expected.
- Natural Gas Price Fundamental Daily Forecast – Supported by Forecast for Cold Temps Until Nov. 18: - Natural gas futures are trading higher on Friday shortly before the regular session opening. Traders are shrugging off yesterday's government report which showed a larger-than-expected storage injection. The move proves that traders are not paying attention to past data, but looking forward to future demand due to weather concerns.



## MAJOR COMMODITIES

Commodity Major	Price	Day	Weekly	Monthly	Yearly
<b>Crude Oil</b>	60.8636	0.12%	-5.40%	-18.37%	5.27%
<b>Brent</b>	71.1059	0.45%	-4.56%	-16.35%	9.43%
<b>Natural gas</b>	3.7718	6.29%	13.51%	13.51%	16.01%
<b>Gold</b>	1210.21	-1.01%	-1.98%	1.15%	-5.32%
<b>Silver</b>	14.1967	-1.39%	-3.72%	-0.66%	-16.17%
<b>Platinum</b>	853.6	-1.22%	-1.55%	4.22%	-7.79%
<b>Palladium</b>	1117.4	-0.60%	-0.22%	4.36%	12.03%
<b>Copper</b>	2.6989	-1.53%	-4.28%	-3.11%	-12.59%
<b>Lead</b>	1904.75	0.00%	0.17%	-2.21%	-24.24%
<b>Aluminum</b>	1990	0.25%	1.87%	-3.73%	-5.28%
<b>Tin</b>	19325	1.44%	1.18%	2.25%	-0.51%
<b>Zinc</b>	2522.5	2.75%	-0.69%	-5.81%	-21.64%



## MCX GOLD CHART



Commodity	S2	S1	Pivot	R1	R2
Gold	31505.7	31721.3	32000.7	32216.3	32495.7

### GOLD TECHNICAL INDICATOR

RSI(14)	BUY
STOCH(9,6)	SELL
STOCHRSI(14)	SELL
MACD(12,26)	BUY
ADX(14)	SELL
Williams %R	NETURAL
CCI(14)	BUY
Highs/Lows(14)	BUY
Ultimate Oscillator	SELL
ROC	BUY
BUY	4
SELL	4
NEUTRAL	1
SUMMARY	NETURAL

## GOLD INTERNATIONAL CHART



Commodity	S2	S1	Pivot	R1	R2
Gold	\$1,212.0	\$1,224.0	\$1,235.0	\$1,247.0	\$1,258.0

### GOLD INTERNATIONAL TECHNICAL INDICATOR

RSI(14)	SELL
STOCH(9,6)	BUY
STOCHRSI(14)	SELL
MACD(12,26)	BUY
ADX(14)	BUY
Williams %R	BUY
CCI(14)	BUY
Highs/Lows(14)	BUY
Ultimate Oscillator	BUY
ROC	BUY
BUY	7
SELL	2
NEUTRAL	0
SUMMARY	<b>STRONG BULLISH</b>



## MCX SILVER CHART



Commodity	S2	S1	Pivot	R1	R2
Silver	38153.3	38432.7	38850.3	39129.7	39547.3

### SILVER TECHNICAL INDICATOR

RSI(14)	BUY
STOCH(9,6)	SELL
STOCHRSI(14)	SELL
MACD(12,26)	BUY
ADX(14)	SELL
Williams %R	NETURAL
CCI(14)	BUY
Highs/Lows(14)	BUY
Ultimate Oscillator	BUY
ROC	BUY
BUY	5
SELL	3
NEUTRAL	1
SUMMARY	NETURAL

## SILVER INTERNATIONAL CHART



Commodity	S2	S1	Pivot	R1	R2
Silver	\$14.4	\$14.6	\$14.7	\$14.9	\$15.0

### SILVER INTERNATIONAL TECHNICAL INDICATOR

RSI(14)	SELL
STOCH(9,6)	BUY
STOCHRSI(14)	SELL
MACD(12,26)	BUY
ADX(14)	SELL
Williams %R	NETURAL
CCI(14)	SELL
Highs/Lows(14)	BUY
Ultimate Oscillator	BUY
ROC	SELL
BUY	4
SELL	5
NEUTRAL	1
SUMMARY	MILD BEARISH





## MCX COPPER CHART



Commodity	S2	S1	Pivot	R1	R2
Copper	428.8	436.7	448.6	456.6	468.5

### COPPER TECHNICAL INDICATOR

RSI(14)	BUY
STOCH(9,6)	SELL
STOCHRSI(14)	SELL
MACD(12,26)	BUY
ADX(14)	SELL
Williams %R	NETURAL
CCI(14)	BUY
Highs/Lows(14)	BUY
Ultimate Oscillator	BUY
ROC	BUY
BUY	5
SELL	3
NEUTRAL	1
SUMMARY	NETURAL

## COPPER INTERNATIONAL CHART



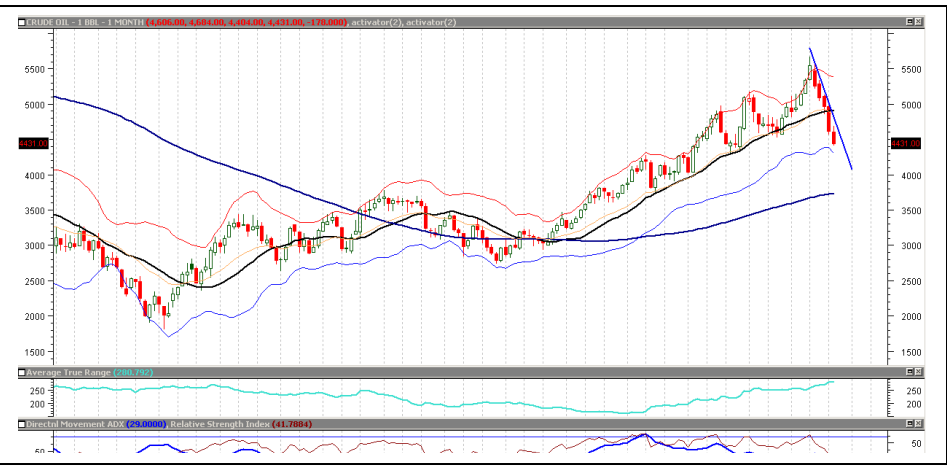
Commodity	S2	S1	Pivot	R1	R2
Copper	\$2.6	\$2.7	\$2.8	\$2.8	\$2.9

### COPPER INTERNATIONAL TECHNICAL INDICATOR

RSI(14)	SELL
STOCH(9,6)	SELL
STOCHRSI(14)	SELL
MACD(12,26)	BUY
ADX(14)	SELL
Williams %R	NETURAL
CCI(14)	SELL
Highs/Lows(14)	BUY
Ultimate Oscillator	BUY
ROC	SELL
BUY	3
SELL	6
NEUTRAL	1
SUMMARY	STRONG BEARISH



## MCX CRUDE CHART



Commodity	S2	S1	Pivot	R1	R2
Crude oil	4689.7	4820.3	4977.7	5108.3	5265.7

BRENT CRUDE OIL TECHNICAL INDICATOR	
RSI(14)	SELL
STOCH(9,6)	SELL
STOCHRSI(14)	SELL
MACD(12,26)	SELL
ADX(14)	SELL
Williams %R	SELL
CCI(14)	SELL
Highs/Lows(14)	BUY
Ultimate Oscillator	SELL
ROC	SELL
BUY	1
SELL	9
NEUTRAL	0
SUMMARY	<b>STRONG BEARISH</b>

## NYMEX CRUDE CHART



Commodity	S2	S1	Pivot	R1	R2
Crude oil	\$63.6	\$65.6	\$67.7	\$69.7	\$71.8

CRUDE.OILNYM TECHNICAL INDICATOR	
RSI(14)	SELL
STOCH(9,6)	SELL
STOCHRSI(14)	SELL
MACD(12,26)	SELL
ADX(14)	SELL
Williams %R	SELL
CCI(14)	SELL
Highs/Lows(14)	BUY
Ultimate Oscillator	SELL
ROC	SELL
BUY	1
SELL	9
NEUTRAL	0
SUMMARY	<b>STRONG BEARISH</b>



## MCX NATURAL GAS



Commodity	S2	S1	Pivot	R1	R2
Natural Gas	222.4	228.0	233.3	238.9	244.2

### NATURALGAS TECHNICAL INDICATOR

RSI(14)	BUY
STOCH(9,6)	BUY
STOCHRSI(14)	SELL
MACD(12,26)	BUY
ADX(14)	BUY
Williams %R	BUY
CCI(14)	BUY
Highs/Lows(14)	BUY
Ultimate Oscillator	BUY
ROC	BUY
BUY	8
SELL	1
NEUTRAL	0
SUMMARY	<b>STRONG BULLISH</b>

## NATURAL GAS INTERNATIONAL



Commodity	S2	S1	Pivot	R1	R2
Natural Gas	\$3.0	\$3.1	\$3.2	\$3.3	\$3.4

### NATURAL GAS INTER. TECHNICAL INDICATOR

RSI(14)	BUY
STOCH(9,6)	BUY
STOCHRSI(14)	SELL
MACD(12,26)	BUY
ADX(14)	SELL
Williams %R	BUY
CCI(14)	BUY
Highs/Lows(14)	BUY
Ultimate Oscillator	BUY
ROC	BUY
BUY	7
SELL	2
NEUTRAL	0
SUMMARY	<b>STRONG BULLISH</b>

## IMP ECONOMOIC DATA TO WATCH FOR THE WEEK

DATE	TIME	CURRENCY	ECONOMIC DATA	FORECAST	PREVIOUS
MonNov 12					
TueNov 13	1:00am	USD	FOMC Member Daly Speaks		
	3:00pm	GBP	Average Earnings Index 3m/y	3.00%	2.70%
		GBP	Unemployment Rate	4.00%	4.00%
	3:30pm	EUR	German ZEW Economic Sentiment	-24.2	-24.7
	8:30pm	USD	FOMC Member Brainard Speaks		
WedNov 14	5:20am	JPY	Prelim GDP q/q	-0.30%	0.70%
	7:30am	CNY	Fixed Asset Investment ytd/y	5.50%	5.40%
		CNY	Industrial Production y/y	5.80%	5.80%
	12:30pm	EUR	German Prelim GDP q/q	-0.30%	0.50%
	3:00pm	GBP	CPI y/y	2.50%	2.40%
		GBP	PPI Input m/m	0.60%	1.30%
		GBP	RPI y/y	3.40%	3.30%
	3:30pm	EUR	Flash GDP q/q	0.20%	0.20%
	7:00pm	USD	CPI m/m	0.30%	0.10%
		USD	Core CPI m/m	0.20%	0.10%
	8:30pm	USD	FOMC Member Quarles Speaks		
ThuNov 15	4:30am	USD	Fed Chair Powell Speaks		
	3:00pm	GBP	Retail Sales m/m	0.10%	-0.80%
	6:30pm	GBP	MPC Member Tenreyro Speaks		
	7:00pm	USD	Core Retail Sales m/m	0.50%	-0.10%
		USD	Retail Sales m/m	0.60%	0.10%
		USD	Empire State Manufacturing Index	19.3	21.1
		USD	Philly Fed Manufacturing Index	20.7	22.2
	8:30pm	USD	FOMC Member Quarles Speaks		
	9:30pm	USD	Crude Oil Inventories		5.8M
	10:00pm	USD	Fed Chair Powell Speaks		
	11:30pm	USD	FOMC Member Bostic Speaks		
FriNov 16	2:00pm	EUR	ECB President Draghi Speaks		
	6:30pm	EUR	German Buba President Weidmann Speaks		



204 Amardarshan Building 3rd floor Saket Nagar , Indore-452018

**Call:** 0731-4797170-173 **Mob:** +91-9303172345 / **Toll Free:** 18001030059 / **SMS:** <INDIRA> to 56070

## DISCLAIMER

This report is for private circulation within the Indira Group. This report is strictly confidential and for information of the selected recipient only and may not be altered in any way, transmitted to, copied or distributed, in part or in whole, to any other person or to the media or reproduced in any form. This report should not be construed as an offer or solicitation to buy or sell any securities or any interest in securities. It does not constitute a personal recommendation or take into account the particular investment objectives, financial situations, or any such factor. The information, opinions, estimates and forecasts contained here have been obtained from, or are based upon, sources we believe to be reliable, but no representation of warranty, express or implied, is made by us to their accuracy or completeness. Opinions expressed are our current opinions as of our current opinions as of the data appearing on this material only and are subject to change without notice.